

SAP® GUI for Java

Java based implementation that provides EnjoySAP look and feel to users of Mac OS, OS/2, Linux, and other UNIX platforms

SAP GUI Family

All members of the SAP GUI family have unique attributes that makes them especially suited for the user environment. SAP GUI for Windows provides native support on Windows platforms (Win 95, 98, NT 4, 2000, XP), while SAP GUI for HTML runs in standard Web browsers (IE and Netscape on Windows) without any client installation. SAP GUI for Java completes the family by providing platform independent support for Mac OS, OS/2, Linux, and other UNIX platforms, both within and outside a Web browser.

Platform-independence

Platform-independence was a major design goal for SAP GUI for Java. As the successor to the previous implementations of SAP GUI for Mac OS, OS/2, and various UNIX platforms, the SAP GUI for Java adds support for SAP applications that use Control Enabling Technology. Thus, new and redesigned EnjoySAP transactions are no longer restricted to Windows users; all users get the same interface regardless of which operating platform they choose.

SAP GUI for Java is a unified SAP front end for multiple platforms (Mac OS, OS/2, Linux and various other Unix versions). SAP GUI for Java brings the EnjoySAP look and feel to these platforms, supporting front-end components (Control Enabling Tehcnology) with JavaBeans.



Web Browser Enabling with mySAP Enterprise Portal

In addition to the standalone "application" solution, SAP GUI for Java can also be used as an applet in a web browser. The functionality is identical to the standalone solution. All necessary components can be deployed by Web-based installations. The applet version of SAP GUI for Java also can be used within the Enterprise Portal. The whole GUI is displayed within the browser frame. No additional window appears.

Availability

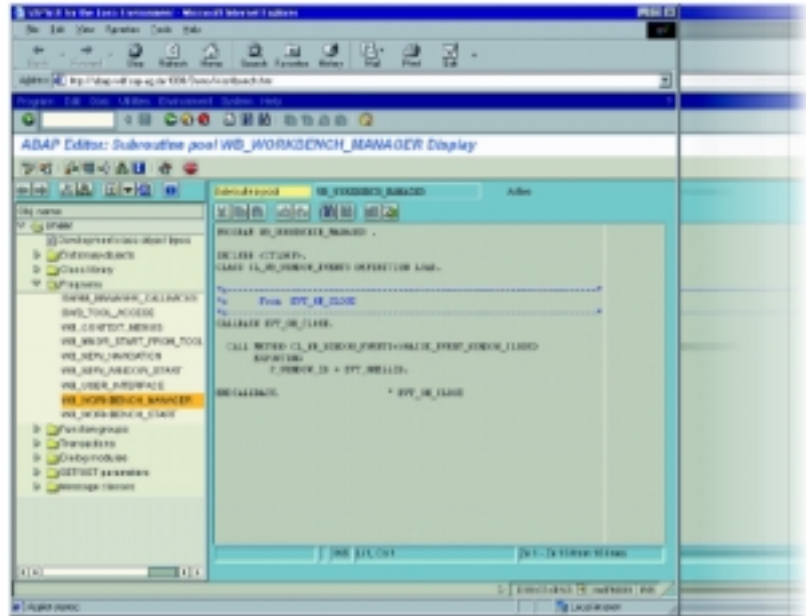
SAP GUI for Java 6.20 is designed to run also with releases prior to SAP Web Application Server 6.20, such as SAP R/3 3.11. It is available on the following platforms:

- Mac OS X 10.1 / 9.1 / 8.6
- OS/2 Warp 3 / Warp 4
- Linux (x86 Processor, Kernel 2.2 or higher)
- Solaris / SunOS 5.8 (Ultra Sparc; Sparc64)
- AIX 4.3.3
- HP-UX 11.0, 11i
- Tru64 (4.0D or higher)
- Windows (98, NT4, 2000, XP)

For latest updates, details on supported platforms, operating system versions and hardware requirements, please have a look at note 146505 in our SAP Service Marketplace and the documentation.

Web Deployment

On all platforms (except Mac OS 8,9) SAPGUI for Java supports web deployment. SAP GUI for Java can be started both standalone and as an applet within a standard web browser (Netscape, IE).



Members of the SAP GUI family

- SAP GUI for Windows (Win 95, Win 98, NT 4.0, Windows 2000, XP)
- SAP GUI for JAVA (Mac OS, OS/2, Linux, various UNIX versions)
- SAP GUI for HTML
Based on SAP Internet Transaction Server (Internet Explorer 4.0 or higher, Netscape 6.2 or higher on the Windows platforms)

Additional information can be found on the SAP Service Marketplace at <http://service.sap.com/sapgui>

mySAP.com – Turning Internet Promises into Profits

In the Internet age, businesses in all industries need to move from intra-company integration to inter-company integration in order to increase competitiveness.

mySAP.com places Web-enabled technology at the heart of all SAP products and services. It extends the reach of SAP applications into the Internet and enables seamless, end-to-end integration of both SAP and non-SAP products. mySAP.com creates an open, collaborative business environment.

mySAP.com also means personalized solutions delivered on demand over the Net, ensuring that users in all positions receive precisely the functionality and services they need, when they need them.

As a result, customers, employees, suppliers and business partners work together as if they were all one company. You can. It does. mySAP.com