

Prestige 662HW Series

802.11g Wireless ADSL 2+ 4-port Security Gateway



ZyXEL's Prestige 662HW series security gateway is a powerful, all-in-one ADSL modem/router for SOHO and SMB applications as well as enterprise branch offices. The security gateway integrates a high-speed ADSL 2+ port, 4-port 10/100Mbps auto MDI/MDIX Ethernet switch, Dial Backup functions, and 54Mbps IEEE 802.11g wireless connectivity.

The Prestige 662HW series is a full-featured security gateway that incorporates VPN, Firewall & Anti-Virus technology. The embedded, smart Anti-Virus scan engine allows users to establish Anti-Virus protection that guards against the entry points of a network. By guarding inbound and outbound traffic, the platform can automatically detect and eliminate viruses and worms from e-mail exchange, Web browsing, and File transfer. The robust Firewall security features and standard IPSec VPN (Virtual Private Network) protects against network intrusion.

Additional features such as Zero Configuration, Auto Fail-over & Fall-back Dial Backup, Traffic Redirect, and Media Bandwidth Management (MBM), maximize performance while minimizing operation and maintenance cost. Management is further simplified by the Web-based configuration and administrator wizards.

Scalable, secure, and easy to use, ZyXEL's Prestige 662HW series is the ideal secure broadband solution that meets today's business needs.

Benefits

Higher-speed Internet Access

The Prestige 662HW series is a high-performance ADSL/ADSL2/ADSL2+ gateway that allows small and medium offices to have Internet access and LAN-to-LAN applications over existing copper lines. With speeds of up to 12Mbps (ADSL2) or 24Mbps (ADSL2+), the Prestige 662HW series offers higher data transfer rates and better bandwidth than traditional ADSL enabled gateways.

Network-based Anti-Virus*

The Anti-Virus scan engine inside the Prestige 662HW series provides users with a deeper range of network security. It detects and eliminates virus and worm attacks from the entry points of a network by scanning each incoming and outgoing e-mail (SMTP/POP3), as well as traffic from the Web (HTTP) and File transfer (FTP). Based on automatic signature updates, it provides real-time network protection against viruses and protects clients that are not already equipped with Anti-Virus technology.

Robust Firewall Security and Enhanced VPN Performance

Based on Stateful Packet Inspection and Denial of Service (DoS), the Prestige 662HW series provides state-of-the-art Firewall performance and robust security to defend against hackers, network intruders, and other hazardous threats. Furthermore an ASIC DES accelerator enhances VPN performance to levels higher than ever before.

Zero Configuration

The Prestige 662HW series's Zero Configuration technology allows users to hook up a DSL connection without hassle. The user-friendly design, which is embedded in the gateway, is OS independent and supports all kinds of operating systems in the host PC.

Auto Fail-over and Fall-back WAN Backup Solution

The Prestige 662HW series features a Fail-over and Fail-back WAN Backup Solution for complete reliability. When the DSL connection fails, traffic is forwarded to either a backup ISDN or analog modem to maintain data transfer. When the DSL connection is re-established, traffic is fully restored. The Prestige 662HW series also performs backup functions by redirecting traffic to a specific gateway to ensure availability of the Internet. The WAN Backup Solution saves device maintenance cost and reduces loss from daily operation.

Higher-speed and Wider-range Wireless LAN Connectivity

With 802.11g+ wireless technology, the Prestige 662HW series delivers wireless transmission rates of up to 100 Mbps when used with ZyXEL's ZyAIR G-160 Wireless PCMCIA Card. Wireless performance is further enhanced by the detachable Reserve SMA antenna, which increases the coverage range. The Prestige 662HW series easily extends a wired network for mobility and flexibility.



Features

ADSL Compliant

- RADS (ANSI T1.413 Issue 2)
- G.dmt ADSL over POTS (G.992.1 Annex A)
- G.dmt ADSL over ISDN (G.992.1 Annex B and U-R2)
- G.lite (G.992.2)
- ADSL2 G.dmt.bis (G.992.3)*
- ADSL2 G.lite.bis (G.992.4)*
- ADSL2+ (G.992.5)*
- Reach Extended ADSL (RE ADSL)*

ATM Support

- 8 PVCs Support
- RFC 1483/2684 Multiple Protocol over AAL5
- RFC 2364 PPP over AAL5
- RFC 2516 PPP over Ethernet
- VC and LLC Multiplexing
- Traffic Shaping UBR, CBR, VBR-nrt
- ATM Forum UNI 3.1/4.0 PVC
- I.610 OAM F4/F5 loop-back, AIS, and RDI OAM cells
- TR-37, TR-62 DSL Auto Configuration*

Firewall Security

- Stateful Packet Inspection
- Prevent DoS, DDoS
- Policy based Access Control
- IP & Generic Packet Filtering
- Real-time Attack Alert and Logs

- DMZ Interface for Public Server*

Virtual Private Network

- 20 IPSec VPN Tunnels
- IKE and Manual Key Management
- AH and ESP Protocol
- DES, 3DES, AES Encryption (ASIC DES Engine)
- SHA-1 and MD5 Authentication
- Tunnel and Transport Mode Encapsulation

Anti-Virus*

- Port Scanning for HTTP, POP3/SMTP, FTP protocols
- Automatically signature file download to provide real time protection
- Protect non-pc devices

Wireless

- 802.11g Compliance
- 802.11g+ 100Mbps*
- 64/128/256 bits WEP Encryption
- Dynamic WEP Key
- MAC Address Filtering
- WPA,WPA-PSK/TKIP
- 802.1x Authentication with RADIUS Client

Routing Support

- IEEE 802.1d Transparent Bridging
- IP Routing: TCP, UDP, ICMP, ARP
- RIP1v1 and RIPv2

- IP Multicast IGMP v1/v2

IP Management

- SUA/Multi-NAT Internet Sharing
- Multimedia Support
- DHCP Server/Relay/Client
- DNS Proxy
- Dynamic DNS
- UPnP Support

Network Management

- Web based Configuration
- Command-line Interpreter (CLI)
- Telnet Remote Management
- SNMP Support
- FTP/TFTP firmware upgrade and configuration backup/restore
- Built-in Diagnostic Tool

Application

- Dial Backup
- Traffic Redirect
- Media Bandwidth Management (MBM)*
- Port based VLAN for Ethernet & WLAN*
- Call Scheduling
- Budget Management
- Vantage CNM Support*
- Content Access Control*

* For future release

Specifications

Hardware Specification

- ADSL: One RJ-11 or RJ-45 Port
- LAN: 4-Port Switch, 10/100M Auto MDI/MDIX
- Antenna: 5dBi detachable antenna
- Console/AUX: RJ45 Port
- CON/AUX Switch

- Reset Button
- Status LEDs Indicator
- Power: 12V DC

Physical Specification

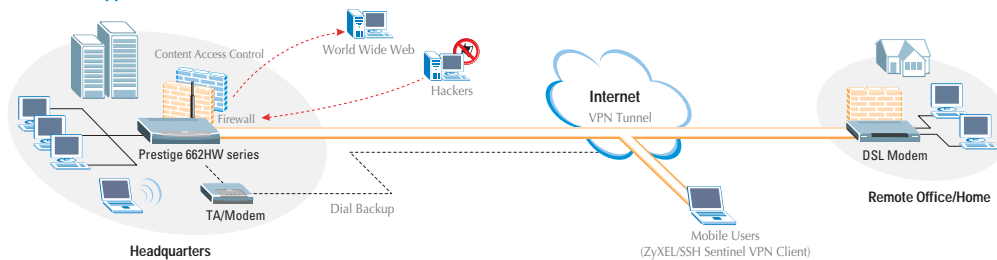
- Dimensions: 180(L) x 162(D) x 36(H) mm
- Weight: 375g

Operating Environment

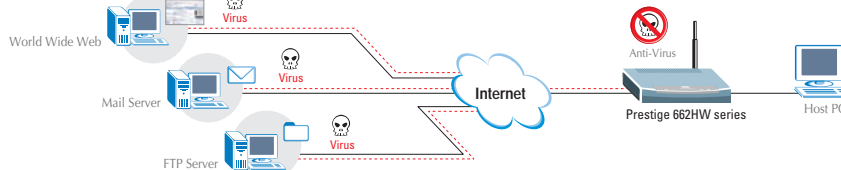
- Temperature: 0 ~ 40°C
- Humidity: 20 ~ 85% (non-condensing)

Application Diagram

Firewall/VPN/CAC Application



Anti-Virus Application



ZyXEL
Unleash Networking Power

ZYNOS FC CE !

This product is designed for the 2.4GHz WLAN network throughout the EC region

Corporate Headquarters
ZyXEL Communications Corp.
Tel: +886-3-578-3342
Fax: +886-3-578-2439
Email: sales@zyxel.com.tw
http://www.zyxel.com
http://www.zyxel.com.tw

Denmark
Tel: +45 39 55 07 00 Fax: +45 39 55 07 07
Email: sales@zyxel.dk
http://www.zyxel.dk

Finland
Tel: +358-9-4780 8400 Fax: +358-9-4780 8448
Email: sales@zyxel.fi
http://www.zyxel.fi

France
Tel: +33 (0)4 72 52 97 97 Fax: +33 (0)4 72 52 19 20
Email: info@zyxel.fr
http://www.zyxel.fr

Germany
Tel: +49 2405 6909 0 Fax: +49 2405 6909 99
Email: sales@zyxel.de
http://www.zyxel.de

North America
Tel: +1-800-255-4101, +1-714-632-0882
Fax: +1-714-632-0858
Email: sales@zyxel.com
http://www.us.zyxel.com

Norway
Tel: +47 22 80 61 80 Fax: +47 22 80 61 81
Email: sales@zyxel.no
http://www.zyxel.no

Spain
Tel: +34 902 195 420 Fax: +34 913 005 345
Email: sales@zyxel.es
http://www.zyxel.es

Sweden
Tel: +46 31 744 7700 Fax: +46 31 744 7701
Email: sales@zyxel.se
http://www.zyxel.se