

Prestige 623R-A1

ADSL Dual-link Router

Quick Start Guide

Version 3.40

August 2003



Introducing the Prestige

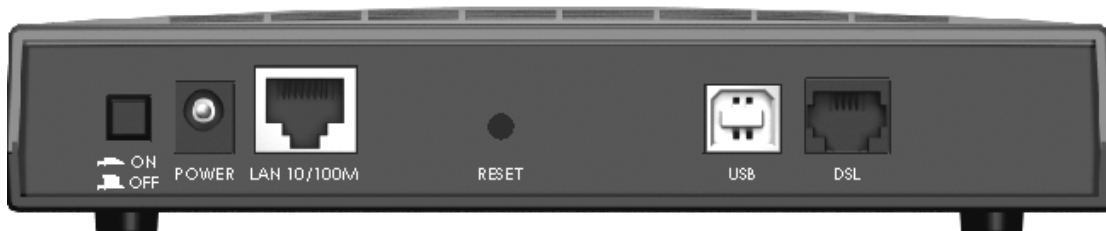
The Prestige 623R-A1 ADSL Dual-link Router is the ideal all-in-one device for small networks connecting to the Internet via ADSL. See your *User's Guide* for more details on all Prestige features.

You should have an Internet account already set up and have been given most of the following information.

INTERNET ACCOUNT INFORMATION	
Virtual Path Identifier (VPI):	_____
Virtual Channel Identifier (VCI):	_____
Multiplexing (VC-based or LLC-based):	<input type="checkbox"/> VC <input type="checkbox"/> LLC
Your device's WAN IP Address (if given):	_____
DNS Server IP Address (if given):	Primary: _____ Secondary: _____
Encapsulation (or Protocol)	
<input type="checkbox"/> RFC 1483	
<input type="checkbox"/> ENET ENCAP	Ethernet Encapsulation Gateway IP Address: _____
<input type="checkbox"/> PPPoA	User Name: _____ Password: _____
<input type="checkbox"/> PPPoE	(PPPoE) Service Name: _____
	User Name: _____ Password: _____

Hardware Connection

Rear Panel Connection



PORT	CONNECTION
1. DSL	Connect to a telephone jack using a telephone wire.

Prestige 623R-A1 ADSL Dual-link Router

PORT	CONNECTION
2. LAN 10/100M	Use an Ethernet cable to connect to a computer for initial configuration. The port is auto-negotiating (can connect at 10 or 100Mbps) and auto-sensing (automatically adjust to the type of Ethernet cable you use (straight-through or crossover)).
3. POWER	Connect to a power source using the power adapter for your region (see your <i>User's Guide</i>).
After you've made the connections, connect the power cable to a power supply and push in the power button to turn on the Prestige. Look at the front panel LEDs.	
USB	The USB port is useful if you have a USB-enabled computer that does not have a network interface card for attaching to your Ethernet network. Refer to the <i>Installing USB Driver</i> section.
RESET	You only need to use this button if you've forgotten the Prestige's password. It returns the Prestige to the factory defaults (password is 1234, LAN IP address 192.168.1.1 etc. see your <i>User's Guide</i> for details).

Front Panel LED

When the Prestige is turned on, the **PWR** LED turns on. The **SYS** and **USB** LEDs blink while performing system testing. The **SYS** LED then turns steady on if the testing is successful. The appropriate **LAN** and/or **USB** LEDs turn on if they are properly connected.



Prestige Factory Defaults

This *Quick Start Guide* provides a basic configuration that should be compatible with your home or small office network setup. Refer to the *User's Guide* for additional configuration instructions.

PRESTIGE FACTORY DEFAULTS			
USB/LAN IP Address	192.168.1.1	Default User name	admin
Subnet Mask	255.255.255.0	Default Password	1234
DHCP IP Pool	192.168.1.33 – 192.168.1.64		

Installing the USB Driver

System Requirement

- Windows 98 SE/Me/2000/XP
- An available USB port

DO NOT connect the USB port at this point.

Follow the steps for your version of operating system to install the USB driver.

For Windows 98 SE/Me

Screen shots for Windows Me are shown.

Step 1. Save your work and close all other Windows applications.

Step 2. Insert the included CD and the main screen pops up automatically.

Step 3. Double-click **Install Driver** on the AutoPlay main screen.

Step 4. A **Welcome** dialog box displays, click **Next**.



Step 5. Click **Yes** to agree to the license agreement.



Step 6. Click **Finish** and restart the computer when prompted to complete the installation



Step 7. Plug the square end of the USB cable into the back of your Prestige and then plug the rectangular end of the USB cable into the back of your computer. A window displays briefly, indicating that the system has found a new hardware.

For Windows 2000/XP

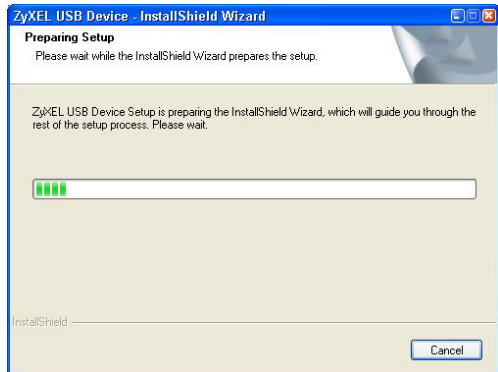
Screen shots for Windows XP are shown.

Prestige 623R-A1 ADSL Dual-link Router

- Step 1.** Save your work and close all other Windows applications.
- Step 2.** Insert the included CD and the main screen pops up automatically.
- Step 3.** Double-click **Install Driver** on the AutoPlay main screen.



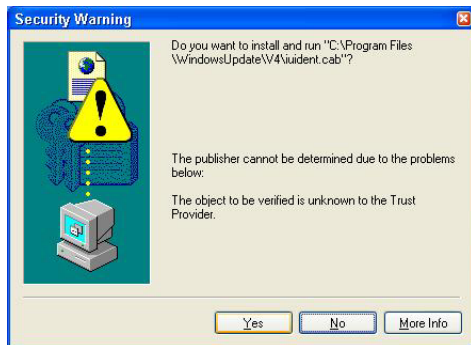
- Step 4.** A **ZyXEL USB Device - InstallShield Wizard** screen displays.



- Step 5.** Connect the USB port to the computer when prompted. A window displays briefly, indicating that the system has found a new hardware.



- Step 6.** If a **Security Warning** screen displays, click **Yes** to continue.

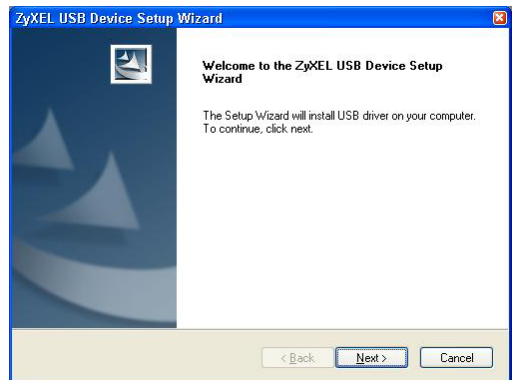


Step 7. A **Found New Hardware Wizard** screen displays. Click **Cancel**.



Step 8. Click **OK** in the **ZyXEL USB Device Setup Wizard** screen to continue.

Step 9. When a **Welcome** dialog box displays, click **Next** to continue.



Step 10. Click **Yes** to agree to the license agreement.



Step 11. For Windows 2000: When a **Digital Signature Not Found** warning screen displays, click **Yes** to continue.

For Windows XP: When a **Hardware Installation** warning screen displays as shown, click **Continue Anyway**.



Step 12. Click **Finish** and restart the computer when prompted to complete the installation.

Verifying Your USB Installation

When your computer finishes rebooting, check the status of the Prestige in the **Device Manager** window. Click **Start, Settings, Control Panel, System, Hardware** and then click **Device Manager**. (Steps may vary depending on the version of Windows).

Verify the status of the Prestige under **Network Adapter**. Check that there is no question mark on the device icon for the Prestige.



Setting Up Your Computer's IP Address

Skip this section if your computer is already set up to accept a dynamic IP address. This is the default for most new computers.

The Prestige is already set up to assign your computer an IP address. Use this section to set up your computer to receive an IP address or assign it a static IP address in the 192.168.1.2 to 192.168.1.254 range with a subnet mask of 255.255.255.0. This is necessary to ensure that your computer can communicate with your Prestige.

Your computer must have a network card and TCP/IP installed. TCP/IP should already be installed on computers using Windows NT/2000/XP, Macintosh OS 7 and later operating systems.

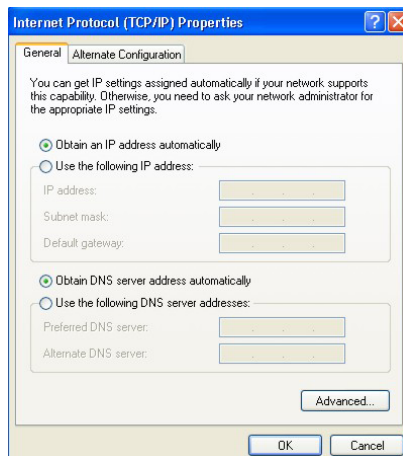
Windows 2000/NT/XP

1. In Windows XP, click **start, Control Panel**. In Windows 2000/NT, click **Start, Settings, Control Panel**.
2. In Windows XP, click **Network Connections**.
In Windows 2000/NT, click **Network and Dial-up Connections**.
3. Right-click **Local Area Connection** and then click **Properties**.
4. Select **Internet Protocol (TCP/IP)** (under the **General** tab in Win XP) and click **Properties**.
5. The **Internet Protocol TCP/IP Properties** screen opens (the **General** tab in Windows XP).

-To have your computer accept a dynamic IP address, click **Obtain an IP address automatically**.

-If you want a static IP address, click **Use the following IP Address** and fill in the **IP address** (use one between 192.168.1.2 and 192.168.1.254), **Subnet mask** (255.255.255.0), and **Default gateway** (192.168.1.1) fields.

Click **Advanced**.

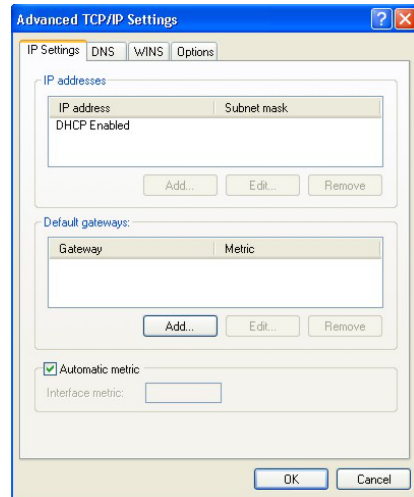


6. Remove any previously installed gateways in the **IP Settings** tab and click **OK** to go back to the **Internet Protocol TCP/IP Properties** screen.
7. Click **Obtain DNS server address automatically** if you do not know your DNS server IP address(es).

If you know your DNS server IP address(es), click **Use the following DNS server addresses**, and type them in the **Preferred DNS server** and **Alternate DNS server** fields.

If you have previously configured DNS servers, click **Advanced** and then the **DNS** tab to order them.

8. Click **OK** to close the **Internet Protocol (TCP/IP) Properties** window.
9. Click **OK** to close the **Local Area Connection Properties** window.



Refer to your *User's Guide* for detailed IP address configuration for other Windows and Macintosh computer operating systems.

Checking/Updating Your Computer's IP Address

1. In the computer, click **Start, (All) Programs, Accessories** and then **Command Prompt**.
2. In the **Command Prompt** window, type "ipconfig" and then press **ENTER** to verify that your computer's static IP address is in the correct subnet (in the range between 192.168.1.2 and 192.168.1.254 if using the default Prestige LAN IP address). Alternatively, to have the Prestige assign your computer a new IP address (from the IP pool), make sure your Prestige is turned on, type "ipconfig /renew" and then press **ENTER**.

Testing the Connection to the Prestige

1. Click **Start, (All) Programs, Accessories** and then **Command Prompt**.
2. In the **Command Prompt** window, type "ping" followed by a space and the IP address of the Prestige (192.168.1.1 is the default).

3. Press **ENTER**. You should see the reply messages displayed as shown. Your computer can now communicate with the Prestige using the **LAN** or the **USB** port.

```
C:\>ping 192.168.1.1

Pinging 192.168.1.1 with 32 bytes of data:

Reply from 192.168.1.1: bytes=32 time=10ms TTL=254
Reply from 192.168.1.1: bytes=32 time<10ms TTL=254
Reply from 192.168.1.1: bytes=32 time<10ms TTL=254
Reply from 192.168.1.1: bytes=32 time<10ms TTL=254

Ping statistics for 192.168.1.1:
    Packets: Sent = 4, Received = 4, Lost = 0 (0% loss),
    Approximate round trip times in milli-seconds:
        Minimum = 0ms, Maximum = 10ms, Average = 2ms

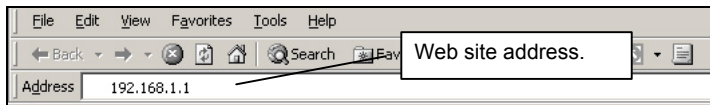
C:\>
```

Configuring Your Prestige

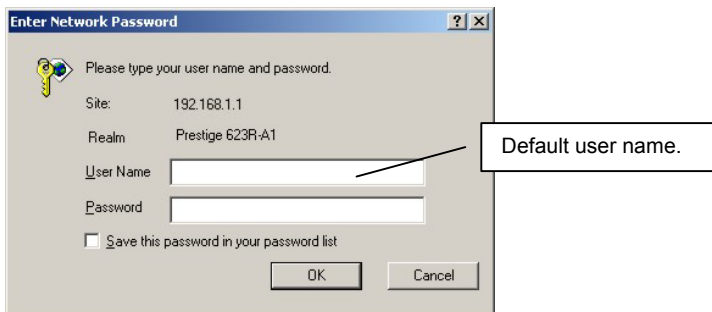
This *Quick Start Guide* shows you how to use the web configurator only. See your *User's Guide* for background information on all Prestige features and SMT (System Management Terminal) configuration.

Accessing Your Prestige Via Web Configurator

- Step 1.** Launch your web browser. Enter “192.168.1.1” as the web site address.

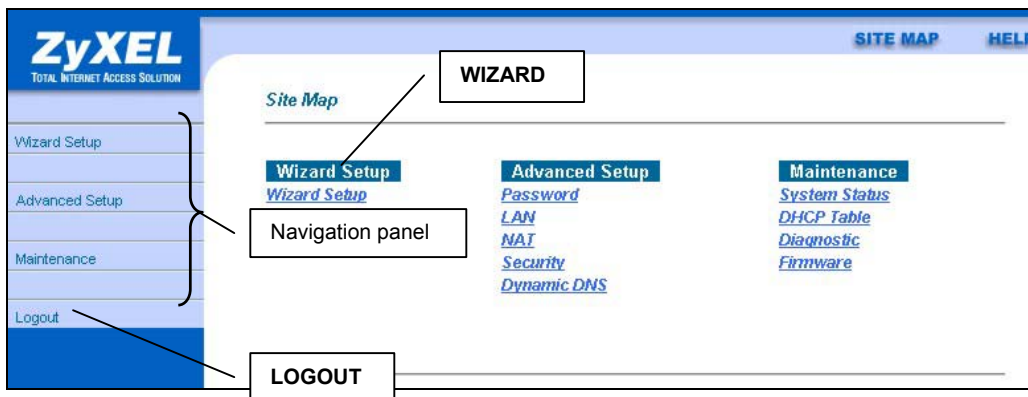


- Step 2.** An **Enter Network Password** window displays. Enter the user name (“admin” is the default), password (“1234” is the default) and click **OK**.



Step 3. You should now see the web configurator **Site Map** screen.

- Click **Wizard Setup** to begin a series of screens to configure your Prestige for the first time.
- Click a link under **Advanced Setup** to configure advanced Prestige features.
- Click a link under **Maintenance** to see Prestige performance statistics, upload firmware and back up, restore or upload a configuration file.
- Click **Logout** in the navigation panel when you have finished a Prestige management session.



The Prestige automatically logs you out if it is left idle for five minutes; press ENTER to log back in again.

Internet Access Using the Wizard

You can use the Wizard Setup screens to configure your system for Internet access settings and fill in the fields with the information in the *Internet Account Information* table.

Step 1. In the **Site Map** screen click **Wizard Setup** to display the first wizard screen.

Wizard Setup - ISP Parameters for Internet Access

Protocol

Virtual Circuit ID

VPI

VCI

ATM QoS Type

Cell Rate

Peak Cell Rate cell/sec

Sustain Cell Rate

Maximum Burst Size

Select an encapsulation type your ISP uses from the **Protocol** drop-down list box.

Enter the VPI and VCI numbers assigned by your ISP in the **VPI** and **VCI** fields.

Refer to the on-line HTML help or the *User's Guide* to set the **ATM QoS Type** and **Cell Rate** fields.

Click **Next**.

Wizard Screen 1

Step 2. The second wizard screen varies depending on what protocol (or encapsulation) type you use.

Wizard Setup - ISP Parameters for Internet Access

Service Name

User Name

Password

IP Address

Obtain an IP Address Automatically

Static IP Address

Connection

Connect on Demand: Max Idle Time Sec

Nailed-Up Connection

If your ISP provides the name of your PPPoE service provider, enter it in the **Service Name** field.

Enter the user name and password *exactly* as your ISP assigned them.

Select **Obtain an IP Address Automatically** if you have a dynamic IP address; otherwise select **Static IP Address** and type your ISP assigned IP address in the text box below.

Select **Connect on Demand** when you don't want the connection up all the time and specify an idle time-out period (in seconds) in the **Max. Idle Timeout** field.

Select **Nailed-Up Connection** when you want your connection up all the time. The Prestige will try to bring up the connection automatically if it is disconnected.

Wizard Screen 2: Internet Connection with PPPoE

Wizard Setup - ISP Parameters for Internet Access

User Name

Password

IP Address

Obtain an IP Address Automatically

Static IP Address

Connection

Connect on Demand: Max Idle Time Sec

Nailed-Up Connection

Refer to the field descriptions discussed previously.

Wizard Screen2: Internet Connection with PPPoA

Wizard Setup - ISP Parameters for Internet Access

IP Address

Enter the IP address given by your ISP in the **IP Address** field.

Wizard Screen 2: Internet Connection with RFC 1483

Wizard Setup - ISP Parameters for Internet Access

IP Address

Obtain an IP Address Automatically
 Static IP Address

IP Address
 ENET ENCAP Gateway

In the **ENET ENCAP Gateway** field, enter the gateway IP address given by your ISP.

Refer to the field descriptions discussed previously.

Wizard Screen2: Internet Connection with ENET ENCAP

Step 3. Click **Finish** to complete the wizard setup.

Test Your Internet Connection

Launch your web browser and navigate to www.zyxel.com. Internet access is just the beginning. Refer to the *User's Guide* for more detailed information on the complete range of Prestige features. If you cannot access the Internet, open the web configurator again to confirm that the Internet settings you configured in the Wizard Setup are correct.

Troubleshooting

PROBLEM	CORRECTIVE ACTION
The PWR and/or SYS LEDs are off.	Make sure the Prestige is connected to the correct power adapter, the power adapter is plugged into an adequate power supply and the Prestige power switch is turned on. Turn the Prestige off and on. If the error persists, you may have a hardware problem. In this case, you should contact your local vendor.
The LAN 10/100M LED won't turn on.	Check the cable connection to the Prestige LAN 10/100M port. Make sure your computer network card is working properly.
The DSL LED is off.	Check the connection between the Prestige DSL port and the wall jack.

Prestige 623R-A1 ADSL Dual-link Router

PROBLEM	CORRECTIVE ACTION
Windows does not auto-detect the USB connection to the Prestige.	<p>Make sure the Prestige is turned on and connected to the USB port on the computer.</p> <p>Perform a hardware scan by clicking Start, Settings, Control Panel and double-clicking Add/Remove Hardware. (Steps may vary depending on the version of Windows).</p> <p>Follow the on-screen instructions to search for the Prestige and install the driver.</p> <p>Check for possible hardware conflicts. In Windows, click Start, Settings, Control Panel, System, Hardware and then click Device Manager. Verify the status of the Prestige under Network Adapter. (Steps may vary depending on the version of Windows).</p> <p>Connect the Prestige to another computer. If the error persists, you may have a hardware problem. In this case, you should contact your local vendor.</p>
USB driver installation crashes my computer.	<p>You may have a sniffer program installed. Remove any sniffer applications on the computer and reboot the computer.</p> <p>Reinstall the USB driver again.</p>
I cannot access the web configurator.	<p>The default user name is "admin" and the default password is "1234". If you have changed the password and have forgotten, you need to reset the Prestige. See <i>User's Guide</i>.</p> <p>Make sure you type in the correct IP address. The default LAN and USB IP address is 192.168.1.1. If you changed the Prestige default IP address then enter the new one as the URL.</p> <p>Check that your computer IP address and the Prestige IP address are on the same subnet.</p>
I cannot ping any computer on the LAN.	<p>If all of the LAN LEDs are off, check the cables between the Prestige and your computer or hub.</p> <p>Check the TCP/IP configuration on your computer. Make sure that the IP address and the subnet mask of the Prestige and the computer are in the same range.</p>
I cannot get a WAN IP address from the ISP.	<p>The WAN IP is provided after the ISP verifies the MAC address, host name or user ID.</p> <p>Find out the verification method used by your ISP and configure the corresponding fields.</p>
I cannot access the Internet.	<p>Make sure the Prestige is turned on and connected to the network.</p> <p>If the Prestige's DSL LED is off, check the cable between the Prestige and the telephone wall jack.</p> <p>Make sure you entered your user name correctly. A username may be case-sensitive.</p>