

Omni 56K Plus Modem

Read Me First

Contents

1. MAKING CONNECTION VIA USB	2
HARDWARE INSTALLATION	2
SOFTWARE INSTALLATION FOR WINDOWS OS	4
UNINSTALLATION.....	7
INSTALL USB DRIVER AND SETUP PPP FOR MACOS.....	9
2. MAKING CONNECTION VIA RS-232	18
HARDWARE INSTALLATION	18
SOFTWARE INSTALLATION	20
3. SETTING UP INTERNET CONNECTION FOR WINDOWS OS	27
INSTALLING TCP/IP.....	27
CONFIGURING TCP/IP	29
CREATING A DIAL-UP CONNECTION	30
4. BITWARE INSTALLATION	31
INSTALLING BITWARE	31
5. FREQUENTLY ASKED QUESTIONS	33

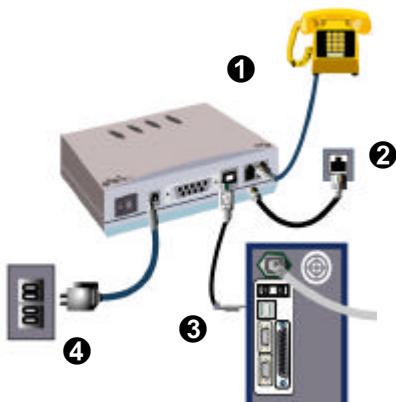
ZyXEL

TOTAL INTERNET ACCESS SOLUTION

1. Making Connection via USB

Hardware Installation

- ❶ Connect your modem to your analog phone or fax.
- ❷ Use the included phone line to connect to the phone jack on the wall.
- ❸ Plug one end of your USB connectors to your modem and another end to any one of available USB ports on your PC.
- ❹ Use the included power adapter to connect your modem to the outlet.



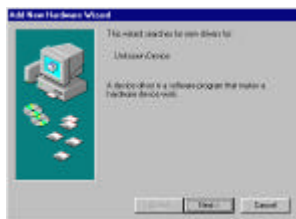
Note 1: Be sure to use the power adapter included in your modem package as your power supply adapter. If you use the one not appropriate for the ZyXEL Omni modem, your new modem could be damaged.

Note 2: The power supply connection is required for ZyXEL Omni 56K Plus modem.

Software Installation for Windows OS

Note: The information in the attached CD-ROM is also available on ZyXEL's web site at <http://www.zyxel.com> .

Follow the steps below to install your USB drivers.

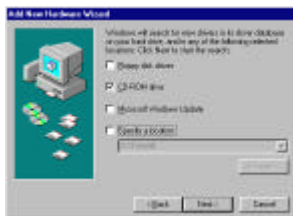


Step 1. Turn on your USB Modem. Be sure your PC is already powered on before turning on your modem. The plug and play function of your Windows 98 will detect your new device and show an installation wizard as left. Click **Next** to continue.

Note: If your Windows system doesn't detect your new device automatically, you may turn off your modem (or unplug the USB cable) and reboot your Windows system, then try the above Step 1 again.



Step 2. Click Next to accept the default selection.

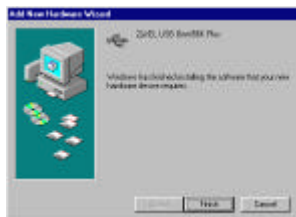


Step 3. Insert the included CD into your CD-ROM driver, select "CD-ROM drive" and then click Next.



Step 4. The installation wizard has found the location of your USB drivers. Click **Next** to continue.

ZyXEL Omni 56K Plus Modem Read Me First



Step 5. ZyXEL USB modem has been successfully installed in your computer. Click **Finish** then follow the wizard to complete the drivers installation.

For more information on how to upgrade your modem's firmware, please refer to the *User's Guide for ZyXEL Omni 56K and Omni 56K Plus Modems*.

Uninstallation

Follow the steps below to uninstall your USB drivers.

Step 1. Turn off your modem.

Step 2. From **Start** select **Settings** to enter **Control Panel**. Double-click on the



Add/Remove Programs icon as shown below.

Step 3. Now, you will see a screen as below:



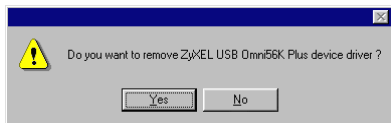
Select this item then click on **Add/Remove** button.

Click **OK** to continue.

ZyXEL Omni 56K Plus Modem Read Me First

Step 4. Select "ZyXEL USB Omni 56K Plus," click on **Add/Remove** button, then click on **OK**.

Step 5. If you are sure to remove ZyXEL USB Omni 56K modem drivers, then click **OK**.

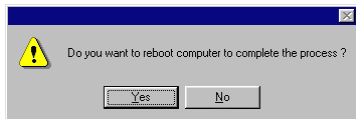


Step 6. The uninstallation program will start removing the programs regarding USB omni drivers. You will see the screen as below:



ZyXEL Omni 56K Plus Modem Read Me First

You have to reboot your system to complete the uninstallation process. Click **Yes** to reboot.



Your uninstallation process is completed after restarting your system.

Install USB Driver and Setup PPP for MacOS

This section provides step by step procedures to install the USB device driver and setup PPP on MacOS.

Install USB Driver for MacOS

Omni56K_Plus_USB_Installer, a MindVision VISE Installer, is used to install ZyXEL Omni56K Plus USB device driver on your Macintosh. Follow the instructions below to install the USB device driver on your Macintosh.

Step 1. Be sure your Omni56K Plus is powered on.

ZyXEL Omni 56K Plus Modem Read Me First

Step 2. Insert the CD attached with your modem device into your CD-ROM drive. You will see the icon as shown below:



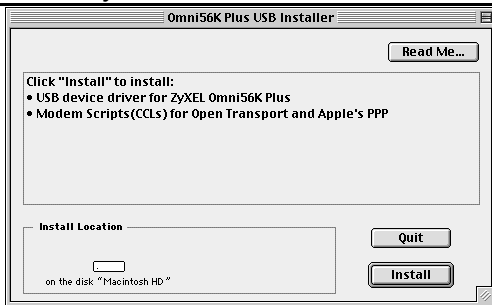
Omni56K Plus USB Installer

Step 3. Plug the USB connector connecting to the Omni56K Plus into any one of your devices with USB port, such as your computer, monitor and keyboard, etc.

Step 4. Double click on the Omni56K_Plus_USB_Installer icon. Then, click **Continue**.

Step 5. Click on **Install** button. The ZyXEL USB device driver will be installed in the extension folder of the system folder.

ZyXEL Omni 56K Plus Modem Read Me First



Step 6. This installation requires your computer to restart after installing the USB device driver. Now, click on **Continue**.



ZyXEL Omni 56K Plus Modem Read Me First

Step 7. Click on **Restart** to reboot your Macintosh.



At this moment, you have finished the USB device driver installation for your MacOS. Following is the information to setup PPP connection for Internet access.

Setup OT/PPP for MacOS

Before using OT/PPP, you must use control panels to setup Modem, TCP/IP and Remote Access(or PPP).

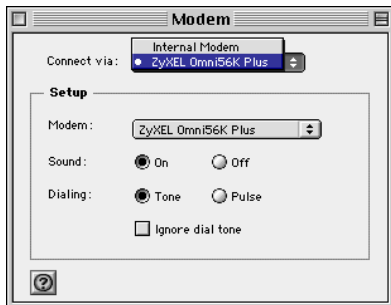
Setup the Modem Control Panel

Step 1. Choose **Control Panels** from **Apple Menu** and open the **Modem control panel**. You will see a window as shown below:

Step 2. Choose the port to **ZyXEL Omni56K Plus** from the “Connect via” pop-up menu.

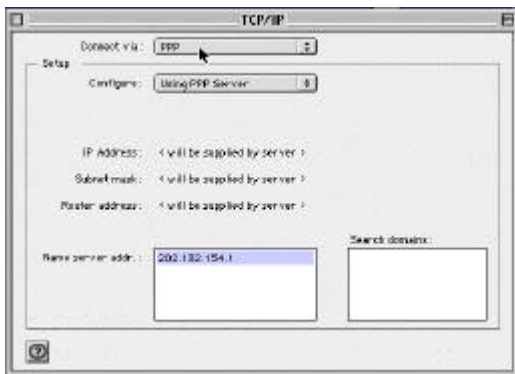
Step 3. Choose **ZyXEL Omni56K Plus** from the “Modem” pop-up menu.

Step 4. Close and save.



Setup TCP/IP for PPP

Step 1. Choose **Control Panels** from **Apple Menu** and open the **TCP/IP control panel**. You will see a window as shown below:



Step 2. Choose **PPP** from the “Connect via” pop-up menu.

Step 3. Choose your configuration method from the “Configure” pop-up menu. For example, **Using PPP Server**.

Step 4. The most common selection is **Using PPP Server** which causes OT/PPP to request IP address from the server when it connects.

Step 5. Enter **name server** addresses.

Step 6. Close and save.

Setup Remote Access (or PPP)

Step 1. Choose **Control Panels** from **Apple Menu** and open the **Remote Access(or PPP)** control panel. You will see a window as shown below:



Step 2. Click **Setup** to show this panel's screen.

Step 3. Click **Guest** or **Registered User**.

Step 4. Enter your PPP user name and password in the text boxes.

Step 5. Enter your ISP's telephone number in the

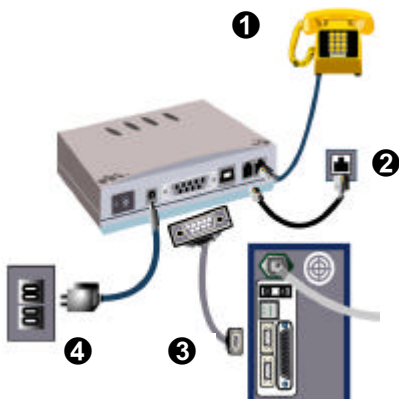
Number text box.

Click **Connect**. This will start to dial up and make an OT/PPP connection.

2. Making Connection via RS-232

Hardware Installation

- ❶ Connect your modem to your analog phone or fax.
- ❷ Use the included phone line to connect to the phone jack on the wall.
- ❸ Plug one end of your RS-232 connectors to your modem and another end to your PC's serial port.
- ❹ Use the included power adapter to connect your modem to the outlet.



Note 1: Before using RS-232 to connect your modem to your PC, please find the COM port on the back of your PC to determine the pin type of connector you need.

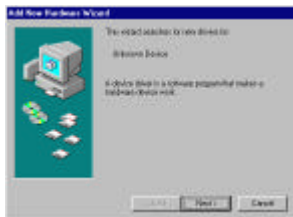
Note 2: Be sure to use the power adapter included in your modem package as your power supply adapter. If you use the one not appropriate for the ZyXEL Omni modem, your new modem could be damaged.

Software Installation

If Plug and Play function is supported by your operation system such as Windows 95/98/2000/NT, when you plug the RS-232 cable attached to your Omni modem to your computer, the Plug and Play function in the operating system will automatically detect. Then, follow the instructions in this section to complete software installation.

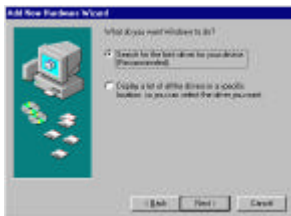
If Plug and Play function is not supported by your operation system, you may go to the next section to install your INF files manually.

Installing by Plug-and-Play

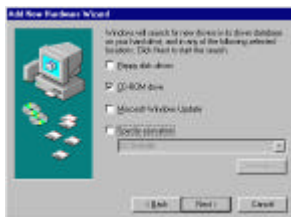


Step 1. Turn on your Modem. Be sure your PC is already powered on before turning on your modem. The plug and play function of your Windows will detect your modem and show an installation wizard as left. Click **Next** to continue.

Note: If your Windows system doesn't detect your modem automatically, you may turn off your modem (or unplug the RS-232 cable) and reboot your Windows system, then try the above Step 1 again; or, go to the next section to install manually.

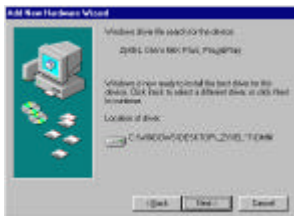


Step 2. Click **Next** to accept the default selection.



Step 3. Insert the included CD into your CD-ROM drive, select "CD-ROM drive" and then click **Next**.

ZyXEL Omni 56K Plus Modem Read Me First



Step 4. The installation wizard has found the location of your INF files. Click **Next** to continue.



Step 5. ZyXEL Omni modem has been successfully installed in your computer. Click **Finish** then follow the wizard to complete the

Installing Manually

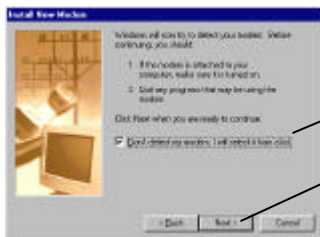
Follow the steps below to install your INF files manually.

Step 1. Be sure your modem is powered on.

Step 2. From **Start** select **Settings** to enter **Control Panel**. Double-click on the **Modems** icon as shown below, then click the **Add** button.



Step 3. Select "Don't detect my modem; I will select form a list." Then, click **Next** to continue.

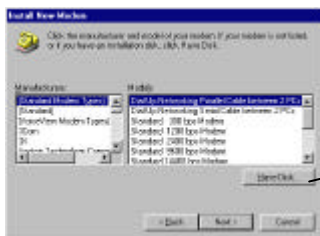


1. Select this check box.

2. Click Next to continue.

ZyXEL Omni 56K Plus Modem Read Me First

Step 4. Click **Have Disk**, then follow the instructions on the following illustrations:



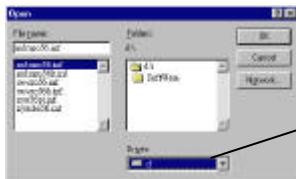
Click here to continue.

- Insert the CD that comes with your device package.
- Click **Browse**, select your CD-ROM drive to find the directory where your INF files located.



Use Browse to find the location of the updated INF file.

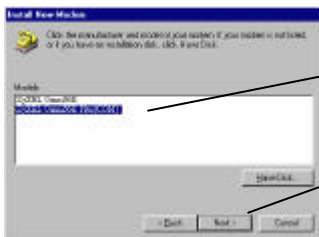
- Select the CD-ROM driver, then click **OK** install INF files.



Select your CD-ROM drive (here is D:), then you will see the next display.

Note: You also can download updated INF files from ZyXEL's FTP, BBS, or Web Site at <http://www.zyxel.com/>.

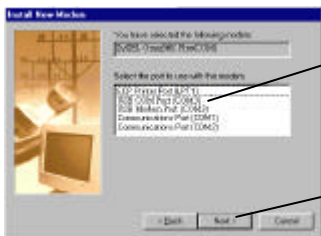
Step 5. You will see a screen as shown below, select the model of your modem, then click **Next** to continue.



1. Select the model of your modem, then click **Next** to continue

2. Click **Next** to continue

Step 6. Select the COM port your new device connected. Then Click **Next**.



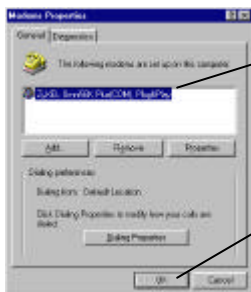
1. Select the COM port your new modem connected. If your modem is connecting to COM1 then select COM1.

2. Click **Next** to continue

ZyXEL Omni 56K Plus Modem Read Me First

Step 7. Please wait for a while to install INF files. At this moment, if see a New Device Installation Wizard for Wave Device of Voice Modem, you can either follow the installation wizard to install this device or click **Cancel** to exit.

Click **Finish** to complete INF files installation. Then you will see a screen as shown below. Now, click **OK** to exit the INF files installation.



The ZyXEL Omni modem has been successfully installed in your PC.

Click **OK** to exit the INF files installation.

For more information on how to upgrade your modem's firmware, please refer to the *User's Guide for ZyXEL Omni 56K and Omni 56K Plus Modems*.

3. Setting up Internet Connection for Windows OS

For accessing Internet, you must have TCP/IP installed in your computer, configure the TCP/IP, then create a PPP connection.

Installing TCP/IP

If TCP/IP is already installed in your computer, you may go to the next section of configuring the TCP/IP; if not, follow the steps below:

Step 1. From **Start**, select **Settings/Control Panel**,



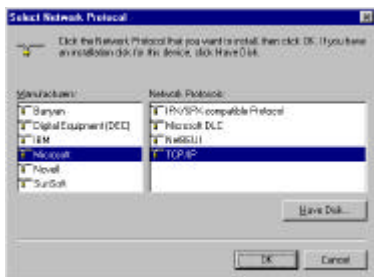
then click on **Network**.

Step 2. Click **Add**.

Step 3. Select **Protocol**, then click on **Add**.

ZyXEL Omni 56K Plus Modem Read Me First

Step 4. Select **Microsoft** and **TCP/IP**, then click on **OK**.



Configuring TCP/IP

If your TCP/IP is already configured, you may go to the next section to setup PPP connection; if not, follow the steps below:

- Step 1.** From **Start**, select **Settings/Control Panel**, then double-click on **Network**.
- Step 2.** Select TCP/IP, then click **Properties**.
- Step 3.** Click on **IP Address** tab. In most cases, you have to select **Obtain an IP address automatically**. If you have an assigned IP address from your ISP, select **Specify an IP address** then enter your IP address and subnet mask.
- Step 4.** Click on **DNS Configuration** tab, select **Enable DNS**, enter your **Host** name, **Domain** name, and the DNS of your ISP, then click on **OK**.



Creating a Dial-up Connection

At this point, you only have one step away to access Internet. Follow the instructions below to create a new dial-up connection.

- Step 1.** Click on **My Computer** on your desktop, select **Dial-up Networking**, then click on **Make New Connection**.
- Step 2.** Give a name to this Dial-up Connection; for example, Omni modem. Then select your new modem as the device to connect to Internet, then click **Next**.
- Step 3.** Enter your ISP's phone number, then click **Next**.
- Step 4.** Click **Finish**.

Now, you have completed dial-up setup. From now on, you can access Internet by your new device.

4. Bitware Installation

Bitware application is contained in the CD that comes with your modem package. For installing Bitware, insert the CD into your CD-ROM driver. Then, follow the steps below to proceed.

Installing Bitware

- Step 1.** From **Windows File Manager** to select your CD-ROM driver, then double-click on the **Msetup.exe** program as shown below.



Msetup.exe

Then, you will see a screen as below:



ZyXEL Omni 56K Plus Modem Read Me First

Step 2. Choose Bitware program from the left list-box, and select your Windows system and language in the right side, then click on **Install**. Follow the wizard to complete the installation process.

5. Frequently Asked Questions

1. May I use the Omni 56K Plus modem in leased line mode?

Ans: The Omni 56K Plus modem does not support leased line.

2. Can two Omni 56K Plus modems connect at rates higher than V.34 when used in home-to-home connection?

Ans: No, the Omni 56K Plus technology is uniquely designed for home-to-ISP connections with the condition that one end (typically ISP site) has digital access to the telephone network and the other end (typically end-user) connects to an analog phone line. However, Omni 56K Plus modems will automatically connect to each other in V.34 mode when used in home-to-home connections.

3. When I use the Omni 56K Plus via PBX, why can't I get a V.90 connection?

Ans: When you make a call via the PBX, the quantization error rate will increase due to the conversion from analog signal to digital signal. So

ZyXEL Omni 56K Plus Modem Read Me First

the downstream speed will not reach V.90 connection.

4. My modem failed in firmware upgrade program. What should I do now?

Ans: Even if you failed to upgrade the firmware, you can still access the Omni 56K Plus in kernel mode. In the kernel mode, follow the same procedure to upgrade the firmware. If you enter 'ati1' the the display will show you that the modem is in Kernel mode.

5. My modem's connection speed is too slow, most of the time it only reached 28800/31200 BPS.

Ans: Omni 56K Plus doesn't support K56flex or X2. If your ISP use K56flex or X2, you can not get the best connection speed.

6. I can not use the Omni 56K Plus USB with my Windows 95, why?

Ans: The Omni 56K Plus USB supports Windows 98. It does not support Windows 95.

7. May I use the Omni 56K Plus USB port and RS232 interface at the same time?

Ans: No, the USB port and RS232 interface of the

Omni 56K Plus can not be used at the same time.

8. When I connect and disconnect the PC to the USB repeatedly and quickly, the PC fails to detect the Omni 56K Plus.

Ans: Don't connect and disconnect the PC to the USB port repeatedly and quickly. It will take some time for the PC to detect the USB port device when we connect or disconnect some device to that port.

9. The PC showed unknown device name for Omni 56K Plus when I first installed it for the Windows 98. Why?

Ans: When you first install the Omni 56K Plus, it is normal for the PC to show unknown device. The PC will recognize the Omni 56K Plus only when you install the Omni 56K Plus driver for the Windows 98.

10. Why can't I hear the ring when I have an incoming call?

Ans: The Omni 56K Plus does not implement the simulation ring when it detects there is an incoming call.

11. Can I connect with PC via USB without using the power adapter.

ZyXEL Omni 56K Plus Modem Read Me First

Ans: No, as the Omni 56K Plus is a passive device, it needs an external power adapter.

12. Why can't I detect my USB modem no matter how many times I attach it?

Ans: Please check the USB setting in BIOS setting. You should enable the USB function in BIOS setting.