

Dimension GS-105/GS-108

5/8-port 100/1000M Workgroup Switch



ZyXEL's GS-105/108 is a 5/8-port 100/1000 Mbps Ethernet switch. It provides high flexibility and high bandwidth connectivity to servers, workstation and other attached devices.

The GS-105/108 fits users who want higher bandwidth without complicated management features. It can be installed in SOHO application to establish connections to main servers. GS-105/108 is a cost-effective solution where high-performance, reliable connections to a desktop are more important than management consideration.

The ease of plug-n-play, outstanding price/performance ratio and flexible design make the GS-105/108 a simple, affordable choice for a wide range of applications.

Benefits

Gigabit Connections for Media-Rich Applications

The GS-105/108 supports gigabit connections, which provide ultra high bandwidth for media-rich application today and years ahead.

Simple-to-Use

The GS-105/108 features auto-sensing 100/1000 Mbps ports that automatically detect the speed and duplex mode of attached servers, workstations, or hubs, making installation quick and easy.

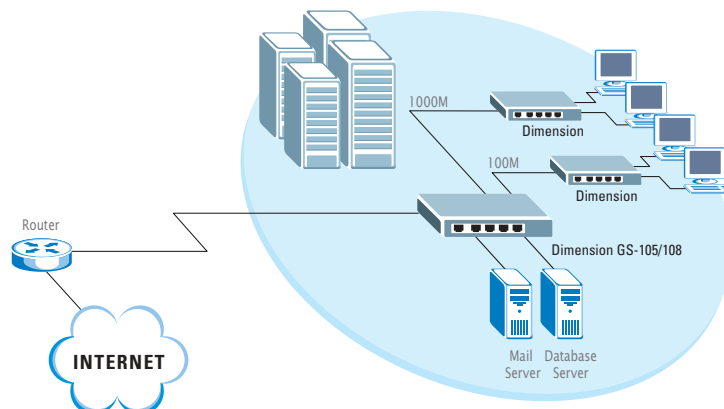
Flow Control for Congestion Prevention

The IEEE 802.3x standard-based flow control allows the GS-105/108 to prevent pending traffic congestion by informing the attached devices to stop transmission. When the switch detects that the buffer for each port is nearly full, it requests the attached devices to wait until it can accept new data.

Auto-MDI/MDI-X

With the auto-MDI/MDI-X feature, the GS-105/108 automatically adjusts the transmit/receive pins of a port based on the signal detected on the wire from the attached device, making crossover cables a thing of the past.

Application Diagram



Features & Specifications

	GS-105	GS-108
General		
Standard	<ul style="list-style-type: none"> • IEEE 802.3 10BASE-T Ethernet (twisted-pair copper) • IEEE 802.3u 100BASE-TX Fast Ethernet (twisted-pair copper) • IEEE 802.3ab 1000BASE-T Gigabit Ethernet • ANSI/IEEE 802.3 Auto-negotiation • IEEE 802.3x Flow Control 	
Interface	• 5 100/1000 BASE-T Ethernet port	• 8 100/1000 BASE-T Ethernet port
Media Interface Exchange	• All ports MDI-II/MDI-X auto-adjustment	
Data Transfer Rate	<ul style="list-style-type: none"> • Fast Ethernet: 100Mbps (half duplex), 200Mbps (full duplex) • Gigabit Ethernet: 2000Mbps (full duplex) 	
Network Cable	<ul style="list-style-type: none"> • 100BASE-TX: 2-pair UTP/STP Cat. 5 cable EIA/TIA-568 (100m) • 1000BASE-T: 4-pair UTP/STP Cat. 5 cable EIA/TIA-568 (100m) 	
Performance		
Packet Forwarding Rate	<ul style="list-style-type: none"> • 148800pps for 100BASE-TX • 1488000pps for 1000BASE-T 	
Switching Method	• Store-and-forward	
MAC Address Table	• 8K entries	
Data Buffer	• 256KB	
Physical & Environmental		
Weight	• 0.6Kg	• 1.0Kg
LED	<ul style="list-style-type: none"> • Per port: 100M, 1000M, LK/ACT (Link/Active), FD/COL (Full-duplex/Collision) • System: power 	
Dimensions	• 164 (L) x 100 (D) x 26 (H) mm	• 250 (L) x 132 (D) x 26 (H) mm
Power Supply	<ul style="list-style-type: none"> • External power adaptor • 120 VAC or 230 VAC, 50~60Hz 	
Power Consumption	• 9.5W max.	• 15W max.
Operating Temperature	• 0°C to 45°C (32°F to 113°F)	
Operational Humidity	• 10% to 90% (Non-condensing)	
EMI	<ul style="list-style-type: none"> • FCC Class A • CE 	
Safety	• UL, cUL	



Corporate Headquarters
 ZyXEL Communications Co.
 Tel: +886-3-578-3942
 Fax: +886-3-578-2439
 Email: sales@zyxel.com.tw
 http://www.zyxel.com

North America
 ZyXEL Communications Inc.
 Tel: +1-800-255-4101
 Email: sales@zyxel.com
 http://www.us.zyxel.com

Germany
 ZyXEL Deutschland GmbH.
 Tel: +49 2405 6909 0
 Fax: +49 2405 6909 99
 Email: sales@zyxel.de
 http://www.zyxel.de

Denmark
 ZyXEL Communications A/S
 Tel: +45 39 55 07 00
 Fax: +45 39 55 07 07
 Email: sales@zyxel.dk
 http://www.zyxel.dk

Norway
 ZyXEL Communications A/S
 Tel: +47 22 80 61 80
 Fax: +47 22 80 61 81
 Email: sales@zyxel.no
 http://www.zyxel.no

Sweden
 ZyXEL Communications A/S
 Tel: +46 31 744 7700
 Fax: +46 31 744 7701
 Email: sales@zyxel.se
 http://www.zyxel.se

Finland
 ZyXEL Communications Oy
 Tel: +358-9-4780 8400
 Fax: +358-9-4780 8448
 Email: sales@zyxel.fi
 http://www.zyxel.fi