

ZyAIR G-100

Wireless LAN 54M PC Card

Quick Installation Guide

Version 1.0

July 2003



About Your ZyAIR

The ZyAIR is an IEEE 802.11g compliant wireless LAN PC card that fits into any CardBus slot. With the ZyAIR, you can enjoy the wireless mobility within the coverage area. The IEEE 802.11g technology provides greater range and offers transmission rate at up to 54 Mbps.

Ad-Hoc Application

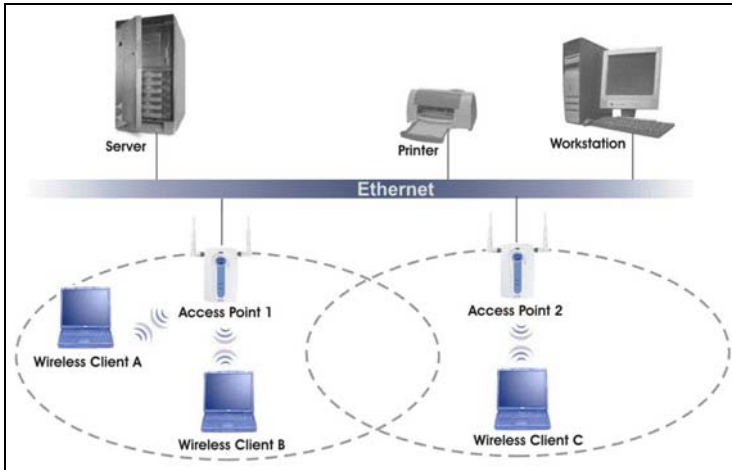
An ad-hoc network consists of two or more computers communicating with one another through the wireless network. No access points (APs) or existing wired networks are needed.

Infrastructure Application

When wireless clients wish to access and share resources on the wired network, they should use infrastructure mode. Wireless clients may move or roam from one coverage area to another seamlessly without network interruption.



Ad-hoc Network Example



Infrastructure Network Example

Installation Overview

- 1.** Installation Requirements
- 2.** Hardware Installation
- 3.** Driver Installation
- 4.** ZyAIR Wireless LAN Utility Installation
- 5.** Disable Windows XP Wireless Configuration Tool
- 6.** Accessing the ZyAIR Utility

1

Installation Requirements

Before installation, make sure you have the following requirements.

- At least 32 MB RAM (64 MB recommended)
- A minimum of 20 MB available hard disk space
- A CD-ROM drive
- A CardBus slot
- Windows 98 SE/ME/2000/XP
- Windows 98 SE users may need the Windows 98 SE CD

2

Hardware Installation

Follow the steps below to install the ZyAIR in your computer.

1. Save your work and close all applications.
2. Locate an available CardBus slot on the computer.
3. With the pin connector facing the slot and the LED side facing up, slide the ZyAIR into the slot. The LEDs turn on if the ZyAIR is properly inserted.

Never bend, force or twist the ZyAIR into the CardBus slot.





LED Display

LED	COLOR	STATUS	DESCRIPTION
PWR	Green	On	The ZyAIR is receiving power.
		Off	The ZyAIR is not receiving power.
LINK	Green	On	The ZyAIR has a connection to a wireless LAN.
		Blinking	The ZyAIR is scanning for a wireless device to which it is to connect.
		Off	The ZyAIR is not connected to a wireless LAN.

3

Driver Installation

Follow the steps for the appropriate version of Windows to install the ZyAIR driver. After the driver is installed successfully proceed to install the ZyAIR Wireless Utility.

Windows 98 SE

1. When Windows automatically detects the ZyAIR, click **Next**.
2. Select **Search for the best driver for your device. (Recommended)**, and click **Next**.



3. Insert the Installation CD into your CD-ROM drive. Select **CD-ROM drive** and click **Next**.



4. When prompted, insert the Windows 98 SE CD and click **OK**. Or specify the location of the Windows 98 SE installation files and click **OK**.



5. When **Add New Hardware Wizard** finds the driver file, click **Next**.
6. Click **Finish** and restart the computer when prompted.

Windows Me

1. Windows automatically detects the ZyAIR. Select **Specify the location of the driver (Advanced)**, then click **Next**.



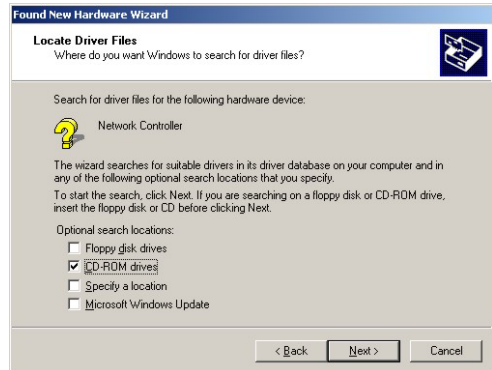
2. Insert the Installation CD into your CD-ROM drive. Select **Search for the best drive for your device** then select only **Removable Media (Floppy, CD-ROM ...)** and click **Next**.



3. When the **Add New Hardware Wizard** finds the driver, click **Next**.
4. Click **Finish** and restart the computer when prompted.

Windows 2000

1. When Windows automatically detects the ZyAIR, click **Next**.
2. Insert the Installation CD into your CD-ROM drive. Select **Search for a suitable driver for my device (recommended)** and click **Next**.
3. Select **CD-ROM drive** and click **Next**.



4. When the **Add New Hardware Wizard** finds the driver, click **Next**.
5. If a **Digital Signature Not Found** window displays, click **Yes** to continue.



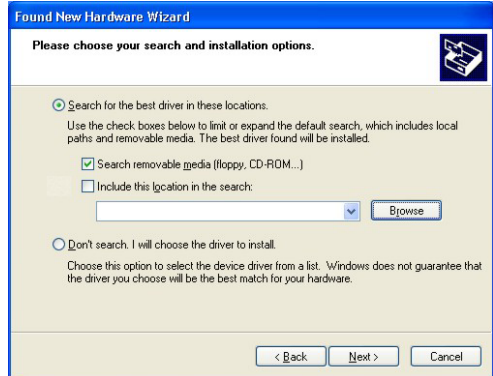
6. Click **Finish** and restart the computer when prompted.

Windows XP

1. Windows automatically detects the ZyAIR. Select **Install from a list or specific location (Advanced)**, then click **Next**.



2. Insert the Installation CD into your CD-ROM drive. Select **Search for the best drive in these locations** then select only **Search removable media. (Floppy, CD-ROM ...)** and click **Next**.



3. If the following warning window displays, click **Continue Anyway**.



4. Click **Finish** and restart the computer when prompted.

4 ZyAIR Wireless LAN Utility Installation

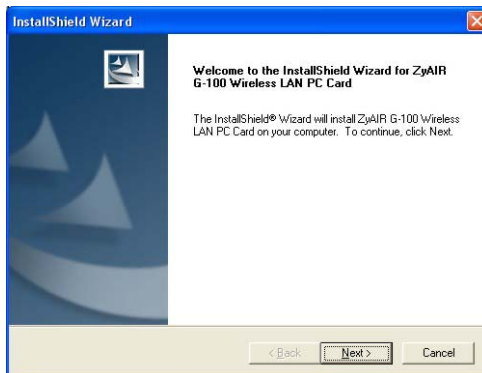
The installation procedures are similar for all support Windows versions. Windows XP screen shots are shown unless otherwise specified.

1. After you have successfully installed the driver, Windows automatically searches and runs the setup program for the ZyAIR Utility. If Windows cannot locate the setup program, a warning screen displays.

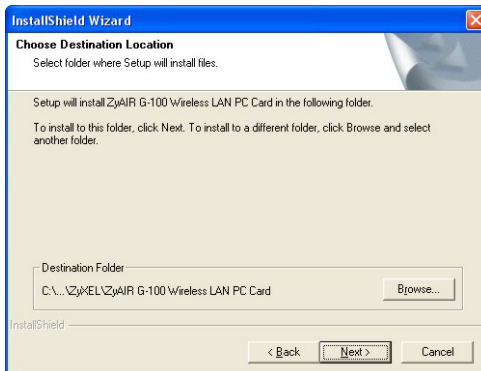
If the setup program is stored on your computer, click **Ignore** to locate and run the setup program manually.



2. A **Welcome** screen displays. Click **Next**.



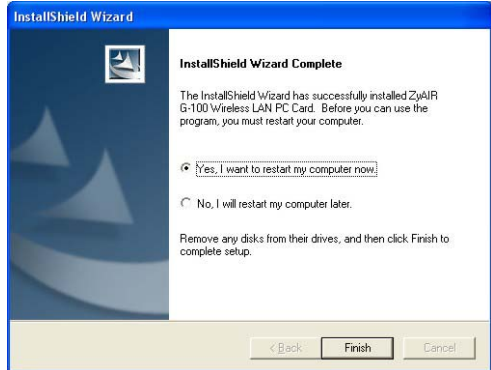
3. Click **Next** to accept the default file location or click **Browse** to select an alternate folder.



4. Click **Next** to start the installation process.



5. Click **Finish** to restart the computer and complete the installation process.



5 Disable Windows XP Wireless Configuration Tool

Windows XP includes a configuration tool for wireless devices.

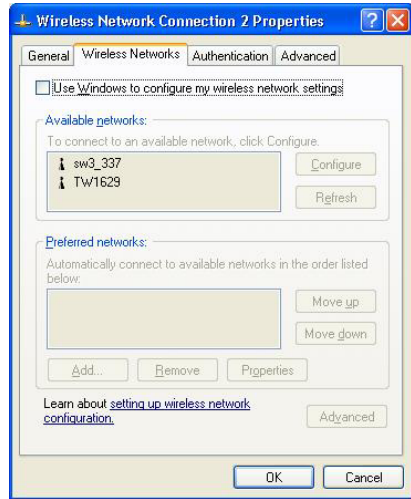
DO NOT use the Windows XP configuration tool and the ZyAIR Utility at the same time. It is recommended you use the ZyAIR Utility to configure the ZyAIR.

Follow the steps below to disable the Windows XP configuration tool.

1. Double-click the network icon for wireless connection in the system tray.
2. When a **Connect to Wireless Network** window displays, click **Advanced**.



3. In the **Wireless Network Connection Properties** window, make sure the **Use Windows to configure my wireless network settings** check box is *not* selected. Click **OK**.



6 Accessing the ZyAIR Utility

1. After the ZyAIR Utility is installed, an icon appears in the system tray.



If the ZyAIR Utility icon displays, the ZyAIR is installed properly.

2. Double-click on the **ZyAIR Wireless LAN Utility** icon in the system tray to open the ZyAIR Wireless LAN Utility program.

Refer to the *ZyAIR G-100 User's Guide* to configure the ZyAIR using the ZyAIR Utility.

Troubleshooting

PROBLEM	CORRECTIVE ACTION
Windows does not auto-detect the ZyAIR.	Make sure the ZyAIR is inserted into the computer CardBus slot properly and then restart your computer. Check the LEDs on the ZyAIR.
	Perform a hardware scan by clicking Start, Settings, Control Panel and double-clicking Add/Remove Hardware . (Steps may vary depending on the version of Windows). Follow the on-screen instructions to search for the ZyAIR and install the driver.
	Check for possible hardware conflicts. In Windows, click Start, Settings, Control Panel, System, Hardware and then click Device Manager . Verify the status of the ZyAIR under Network Adapter . (Steps may vary depending on the version of Windows).
	Install the ZyAIR in another computer. If the error persists, you may have a hardware problem. In this case, you should contact your local vendor.

PROBLEM	CORRECTIVE ACTION
<p>Cannot start the ZyAIR Wireless LAN Utility.</p>	<p>Make sure the ZyAIR is properly inserted and the LINK LED blinks.</p> <p>Check for possible hardware conflicts. In Windows, click Start, Settings, Control Panel, System, Hardware and then click Device Manager. Verify the status of the modem under Network Adapter. (Steps may vary depending on the version of Windows).</p> <p>Install the ZyAIR in another computer. If the error persists, you may have a hardware problem. In this case, you should contact your local vendor.</p>
<p>The ZyAIR Wireless LAN Utility displays only three tabs.</p>	<p>When the ZyAIR Wireless LAN Utility displays only three tabs, you are using the Windows XP wireless configuration tool at the same time. Refer to the <i>Disable Windows XP Wireless Configuration Tool</i> section to disable the Windows XP wireless configuration tool.</p>