

Dimension ES-1016A/ES-1024A/ES-1124

Unmanaged Fast Ethernet Switch



ES-1016A
16-port Unmanaged Fast Ethernet Switch



ES-1024A
24-port Unmanaged Fast Ethernet Switch



ES-1124
24-port Unmanaged Fast Ethernet Switch with 2 Gigabit Ports

Recommended for

- Small and Medium Business looking for cost-effective edge switch to desktops
- Business looking for minimal network management effort and reduced expenses; no configuration required
- Small and Medium Business or campus with a Gigabit backbone looking for enhanced network performance (ES-1124)

Features

Standard Compliance

- IEEE 802.3 10Base-T Ethernet
- IEEE 802.3u 100Base-Tx Ethernet
- IEEE 802.3x Flow control
- IEEE 802.1p Class of service
- IEEE 802.ab 1000Base-T Ethernet
- IEEE 802.3z Gigabit Ethernet

Performance

- 3.2Gbps for ES-1016A, 4.8Gbps for ES-1024A, 8.8Gbps for ES-1124, non-blocking switching fabric

- 1488000pps forwarding rate for 1000Base-T port, 148800pps forwarding rate for 100Base-Tx port, 14880pps forwarding rate for 10Base-T port
- wire-speed performance

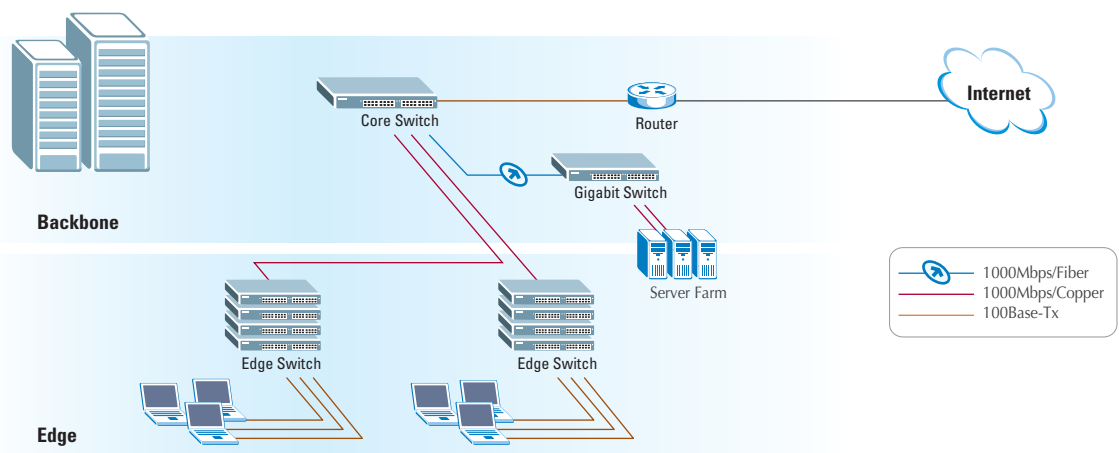
Traffic Management

- IEEE 802.1p CoS
- Two priority queues
- IEEE802.3x flow control
- Broadcasting storm control

Gigabit Connectivity (ES-1124)

- Two fixed 1000Base-T copper RJ-45 ports for backbone connection or server farm application
- Two fixed mini-GBIC slots provide gigabit fiber connection for long loop reach

Application Diagram



Feature Matrix

Dimension Unmanaged Switch

	Fast Ethernet Switch			Gigabit Switch	
	ES-1124	ES-1024A	ES-1016A	GS-1124	GS-1116
Port Number 10/100 RJ45	24	24	16	--	--
Port Number 100/1000	2x1000Base-T	--	--	24x1000Base-T	16x1000Base-T
Gigabit Fiber	2xmini-GBIC (shared)	--	--	2xmini-GBIC (shared)	2xmini-GBIC (shared)
802.3/802.3u Compliant	•	•	•	•	•
802.1p CoS	•	•	•	•	•
Jumbo Frame	--	--	--	•	•
All Ports MDI/MDI-X	•	•	•	•	•
full/half Duplex	•	•	•	•	•
Auto Negotiation	•	•	•	•	•
VLAN packet pass through	•	•	•	•	•
MAC Address Table	8K	4K	4K	4K	4K
Switching Capability	8.8Gbps	4.8Gbps	3.2Gbps	48Gbps	32Gbps
Packet Buffer	2.5Mbit	1.25Mbit	1.25Mbit	2Mbit	2Mbit
Dimension	440 x 161 x 44	440 x 120 x 44	440 x 120 x 44	440 x 224 x 44	440 x 224 x 44
W x D x H (mm)	(1U, 19")	(1U, 19")	(1U, 19")	(1U, 19")	(1U, 19")
Rack mountable	•	•	•	•	•
Internal Switching Power	•	•	•	•	•

Specifications

Technical Specification

- All ports are auto-crossover (auto-MDI-X)
- Fan free design
- MAC address entries:
 - ES-1124: 8K
 - ES-1024A/ES-1016A: 4K
- Memory buffer:
 - ES-1124: 2.5Mbits
 - ES-1024A/ES-1016A: 1.25Mbits

Hardware Specification

- Connectors
 - 16/24 10/100 RJ-45 ports, auto-negotiation and auto-crossover
 - 2 1000Base-T ports, RJ-45 (ES-1124)
 - 2 mini-GBIC slots, SFP (ES-1124)
 - 19" in width for rack-mounted, 120 mm compact size design (ES-1016A/ES-1024A)

Physical Specification

- Dimensions
 - 440(L) x 120(D) x 44(H)mm (ES-1016A/1024A)
 - 440(L) x 161(D) x 44(H)mm (ES-1124)
- Weight:
 - 1.4 kg (ES-1016A)
 - 1.5 kg (ES-1024A)
 - 2.2 kg (ES-1124)

Power Requirement

- Input Voltage 100~ 240 VAC, 50/60Hz
- Max power rating:
 - ES-1124/21Watt
 - ES-1024A/19Watt
 - ES-1016A/14Watt

Operating Environment

- Operating temperature: 0°C ~ 45°C
- Storage temperature: -25°C ~ 70°C
- Operating humidity: 10% ~ 90%, non-condensing



Corporate Headquarters
ZyXEL Communications Corp.
 Tel: +886-3-578-3942
 Fax: +886-3-578-2439
 Email: sales@zyxel.com.tw
 http://www.zyxel.com
 http://www.zyxel.com.tw

Denmark
 Tel: +45 39 55 07 00 Fax: +45 39 55 07 07
 Email: sales@zyxel.dk
 http://www.zyxel.dk

Finland
 Tel: +358-9-4780 8400 Fax: +358-9-4780 8448
 Email: sales@zyxel.fi
 http://www.zyxel.fi

France
 Tel: +33 (0)4 72 52 97 97 Fax: +33 (0)4 72 52 19 20
 Email: info@zyxel.fr
 http://www.zyxel.fr

Germany
 Tel: +49 2405 6909 0 Fax: +49 2405 6909 99
 Email: sales@zyxel.de
 http://www.zyxel.de

North America
 Tel: +1-800-255-4101, +1-714-632-0882
 Fax: +1-714-632-0858
 Email: sales@zyxel.com
 http://www.us.zyxel.com

Norway
 Tel: +47 22 80 61 80 Fax: +47 22 80 61 81
 Email: sales@zyxel.no
 http://www.zyxel.no

Spain
 Tel: +34 902 195 420 Fax: +34 913 005 345
 Email: sales@zyxel.es
 http://www.zyxel.es

Sweden
 Tel: +46 31 744 7700 Fax: +46 31 744 7701
 Email: sales@zyxel.se
 http://www.zyxel.se